



An autumn wreath with crepe paper flowers and pampas grass

v15982

Make a wreath from flowers and bunny tail grass made from crepe paper. Attach these around a metal ring with artificial pampas grass.

Comment faire



1 Cut a 30 cm long and 5 cm wide piece of crepe paper. Use the template at the bottom of the PDF file. Follow the stretch direction on the template and stretch the piece of crepe paper completely.



2 Fold the piece of crepe paper twice lengthwise; you now have four layers. Cut fringes along one length through all four layers as shown in the photo. Cut the fringes with an approx. 3 mm gap between each, 5 cm from the edge.



3 Now roll up this piece of crepe paper tightly as shown in the photo. Roll it between your hands to thin out the fringes.





4 Unfold the piece of crepe paper and attach onto one end of a floral stem wire using a glue gun. Wrap the paper around the top of the floral stem wire a couple of times to secure it.



5 Continue wrapping the crepe paper downwards at an angle around the floral stem wire to your desired length. Apply glue regularly using a glue gun.



6 Cut a 20 cm piece of crepe paper. Attach one end onto the bottom of the bunny tail grass. Wrap the crepe paper strip around the floral stem wire at a downward angle and apply glue regularly.



7 Vary the look of the bunny tail grass by cutting the crepe paper in different widths or vary how tight you wrap the paper around the floral stem wire.

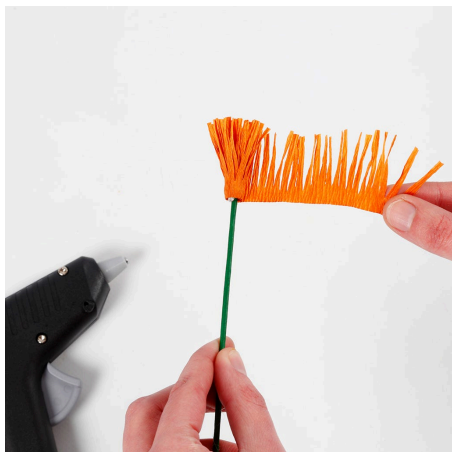


8 Print and cut out the template which is available as a PDF file for this idea. Cut out all the parts for a flower from crepe paper. Remember to cut out following the stretch direction illustrated on each template. The PDF file includes templates for large and small petals. You will need five flowers for this wreath – large and small flowers. You will need to cut out the petals and the leaves from crepe paper. You will also need a piece of crepe paper for the stamen and a piece of 1 cm wide x 20 cm long green crepe paper to cover the stalk. You may use floral tape.

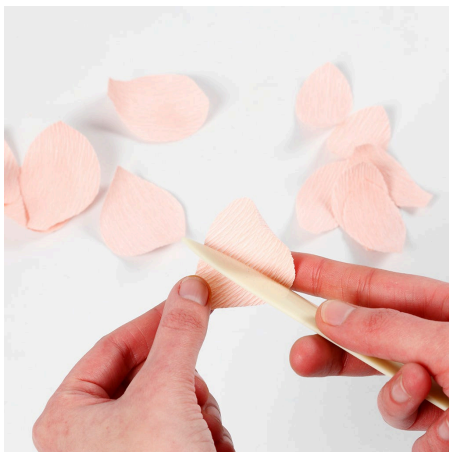


9 Roll up this piece of crepe paper tightly once you have cut the fringes. Roll it between your hands to thin out the fringes.

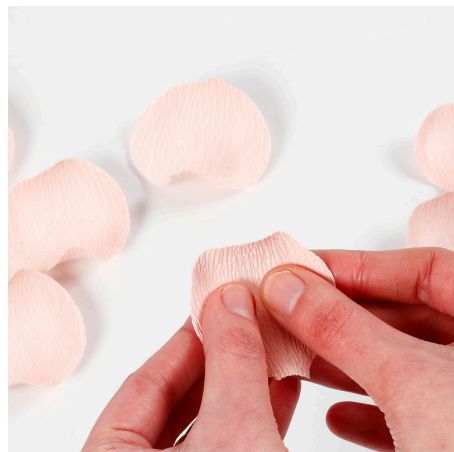




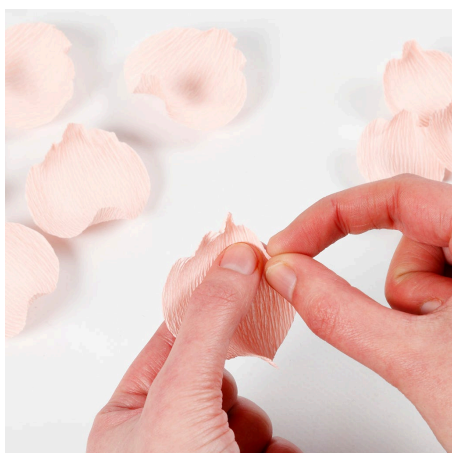
10 Unfold the piece of crepe paper and attach it onto one end of a floral stem wire using a glue gun.



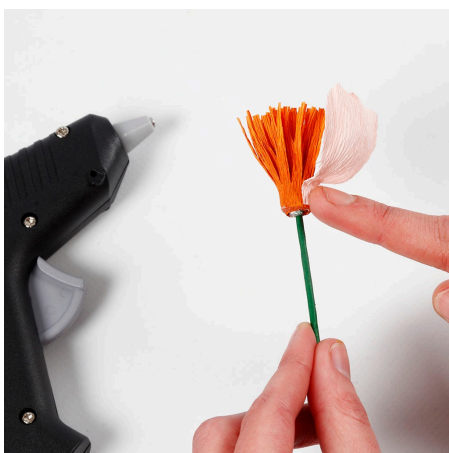
11 Shape each petal using a bone folder to pull the petal upwards between the bone folder and your thumb; the same technique as curling a ribbon with scissors.



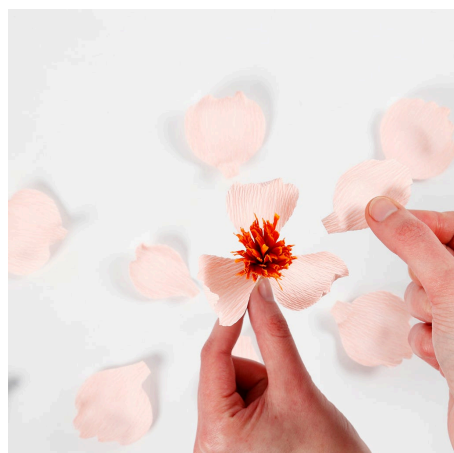
12 Shape the petal by stretching the middle of it, so that it rounds as shown in the photo. Repeat this procedure with the rest of the petals.



13 Twist the edges of the petal back and forth along the entire edge in order to create a wavy edge. Repeat this procedure on all six petals.



14 Attach the first petal onto the stamen using a glue gun.

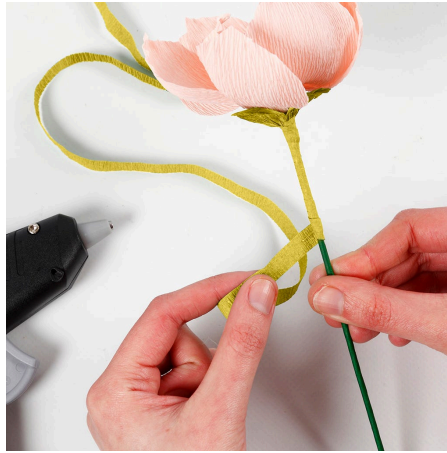


15 Distribute and attach another two petals onto the stamen. Finish by attaching the remaining three petals onto the stamen staggered between the first three petals.





16 Attach the leaves onto the floral stem wire, thus covering the bottom of the petals.



17 Cover the floral stem wire with floral tape or with the cut-out crepe paper. Stretch out the long piece of green crepe paper. Fasten one end onto the leaves. Wrap the paper at an angle around the floral stem wire, securing with glue regularly.



18 Separate the pampas grass bundle into individual stems and cut into smaller pieces. Glue the cut ends to prevent the pampas grass from unravelling.



19 Wrap one quarter of the metal ring with floral tape. Beginning on the far left, cover 2/3 of this area by attaching small bundles of pampas grass and crepe flowers with green florist wire.



20 Beginning on the far right, cover the remaining 1/3 with small bundles of pampas grass and crepe flowers with green florist wire. Trim the ends of the bundles in the area where the 2/3 covered and the 1/3 covered wreath meet. Hide the florist wire and the ends of the bundles underneath the crepe flowers.



21 Secure the florist wire on the back by twisting a hoop, wrap the wire once around the wreath and twist the wire and the hoop together. Trim the excess wire.





22 Cut a 120 cm piece of paper raffia. Fold it four times, make a loop and wrap the raffia around the wreath. Feed the ends through the loop and tighten. Tie the four ends together at the other end with a knot and trim.



