



## A Bracelet with a Heart Toggle Clasp

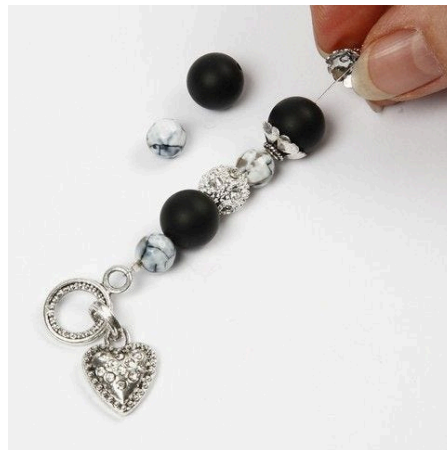
v12534

Agate beads and rhinestone beads are threaded onto a piece of beading wire and fastened with a toggle clasp using crimp beads.

### *Comment faire*



**1.** Attach a piece of beading wire onto one part of the clasp using a crimp bead.



**2.** Thread the beads onto the wire until a desired length is achieved. Finish with the smallest bead. Note that the clasp measures aprox. 2cm.



**3.** Attach the other part of the clasp using a crimp bead. A pair of bent nose pliers is an excellent piece of tool for this procedure.