



A Bracelet with a crocheted Border

v12840

A piece of jewellery chain is decorated with charms and a crocheted border made with a piece of polyester cord.

Comment faire



1. Take a suitably long piece of jewellery chain and attach the clasp with a round jump ring.



2. Cut an approx. 2.5m long piece of polyester cord for the crocheted border. Attach the doubled over piece of cord to the first section of the jewellery chain.



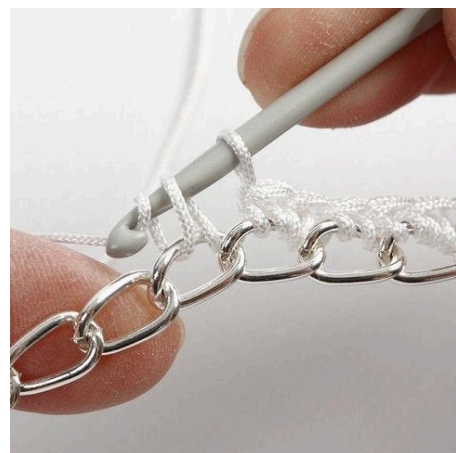
3. Now thread the cord ends through the loop and start crocheting with double crochet stitches.



4. Use a crochet hook to fetch the first stitch through one of the small sections of jewellery chain.



5. Fetch another stitch with a crochet hook and crochet it through the first stitch.



6. Now crochet two double crochet stitches in each section of the jewellery chain.





7. Finish the crochet border on the jewellery chain by pulling the cord end through the last stitch.



8. Secure the ends.



9. Carefully melt the ends.



10. Use two pairs of pliers for attaching the charms.