

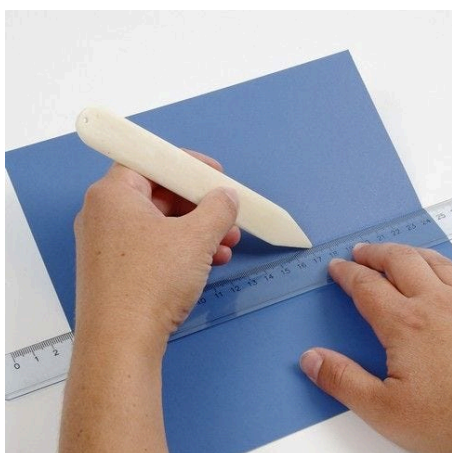


## A Tall Greeting Card with Windows

v12827

This greeting card with punched-out squares is decorated with patterned Vivi Gade Design paper.

### *Comment faire*



**1.** Cut a piece of card, fold it in half to make an open greeting card.

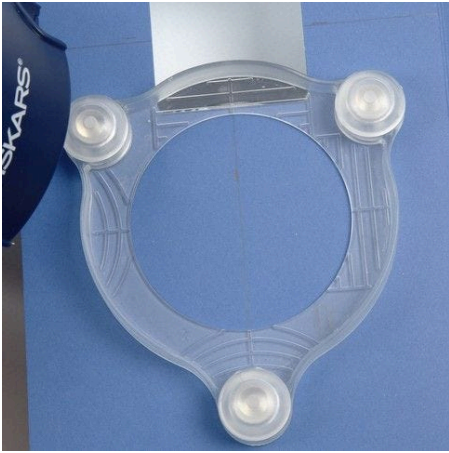


**2.** Cut a piece of patterned paper to fit the inside of one half of the card – and attach it with E-Z runner (double-sided adhesive pre-cut strips).

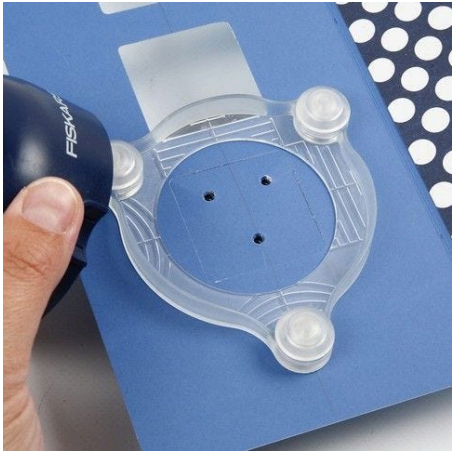


**3.** Place the lower part of the window punch on the table. Place the greeting card on top and then the transparent part on top of the greeting card. The transparent part allows you to guide where to cut out the window. You may want to draw a line in the middle of the greeting card to use as a guide for the punch.





**4.** Punch out the next window using the same procedure and the transparent part is now easy to use as a guide.



**5.** When a window has been punched out, remove the cut-out card part to reveal a lovely cut-out window.