



Bracelets with Faceted and Metal Beads

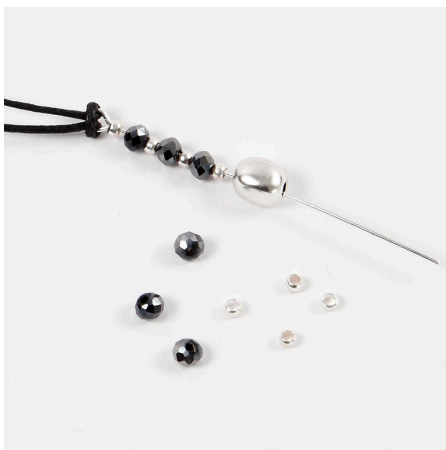
v14972

A delicate, thin bracelet made from cotton cord with an eye pin with faceted and metal beads as well as a pendant. Fastened with a magnetic clasp.

Comment faire



1 Double over a piece of cotton cord and pass the loop through the loop of the eye pin.



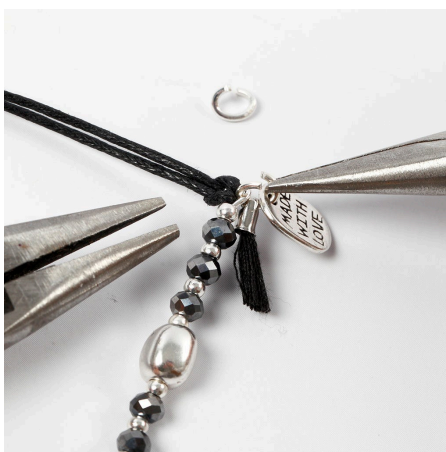
2 Put faceted beads onto the eye pin with crimp beads in between. Put a metal bead in the middle.



3 Cut off approx. 2 mm of the end of the eye pin and twist it to form a loop using round nose pliers.



4 Tie a doubled over piece of cotton cord onto the loop like you did at the start.



5 Put a tassel and a metal pendant onto an oval jump ring and attach the oval jump ring to the loop of the eye pin.



6 Cut the cords to the desired length (all the same length). Squeeze a drop of glue inside each part of the hollow, two-part magnetic clasp and push each pair of cord ends inside.





7 Carefully bend the eye pin with the beads to form a natural curve around the wrist.