



A Bead Chain Necklace and Jewellery Pendant with a Stone

v15116

This jewellery pendant with a stone is threaded onto a bead chain which is fastened with the supplied fastener. The bead chain may be shortened using flush cutters.

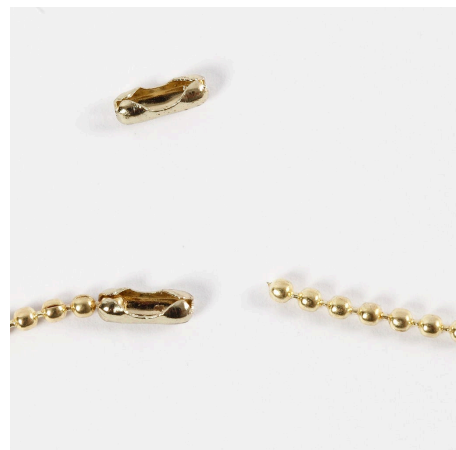
Comment faire



1 Cut the chain to the desired length using flush cutters.



2 Thread the jewellery pendant onto the bead chain.



3 Fasten the bead chain with the supplied fastener.



Another variant -



Another variant -



Another variant -





Another variant -



Another variant -