



A wooden 3D Christmas Tree with Decorations and Christmas Baubles

v15028

This Christmas tree is painted with craft paint and then assembled. Decorations are glued on with a glue gun.

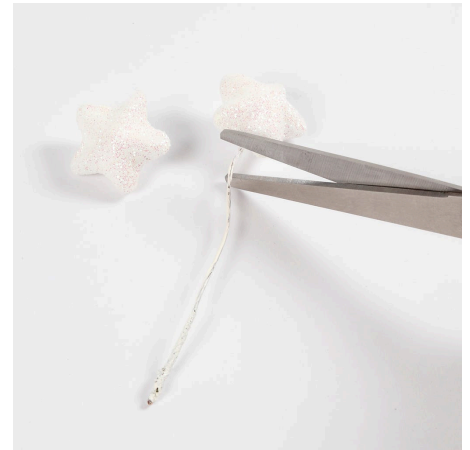
Comment faire



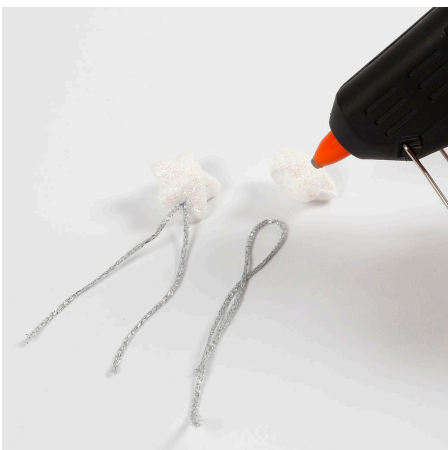
1 Paint the wooden parts unassembled. Apply two coats to cover completely.



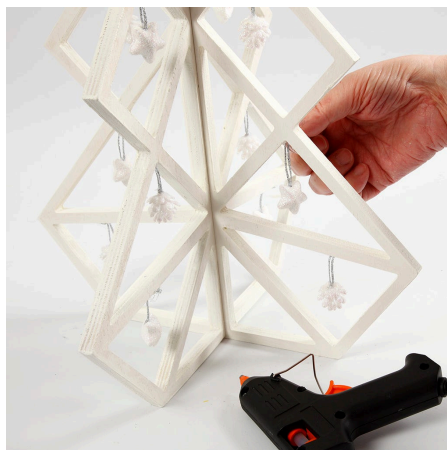
2 Assemble all the parts as illustrated when the paint is dry.



3 Cut off the stems from the decorations.



4 Glue a string onto the decorations using a glue gun.



5 Attach decorations and Christmas baubles onto the Christmas tree using a glue gun.