



A Place Card decorated with a 3D Effect Card Flower

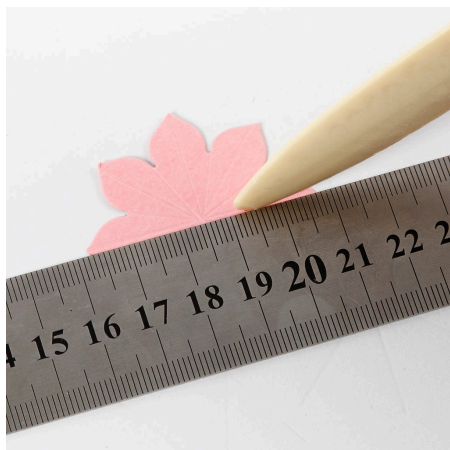
v15391

Decorate this place card with a 3D effect card flower and a self-adhesive rhinestone.

Comment faire



1 Punch out a card flower.



2 Score along the middle of the petals using a bone folder and between the petals. Slightly fold the flower to give it a 3D effect.



3 Write a name on the place card. Cut a suitable piece of paper for a paper band and secure with double-sided adhesive tape. Decorate the card flower with a rhinestone and attach it onto the paper band with double-sided adhesive tape. Slide the paper band onto the place card.





4 See our matching ideas: Invitation
15339 Menu card 15392