

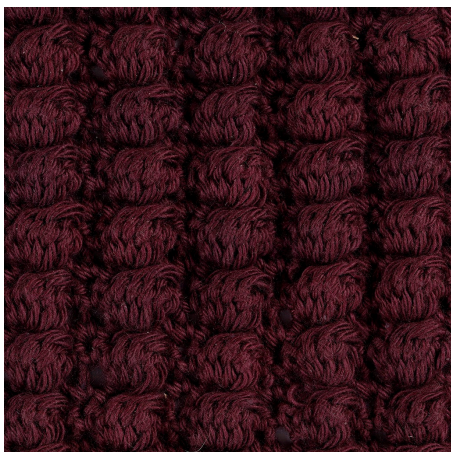


## A crocheted Dishcloth with Bobble Stitches

v15516

This dishcloth is crocheted with bobble stitches (which are abbreviated bbs or pc) and the finished dimensions of the dishcloth are 17 x 17 cm. We have used cotton yarn 8/4 on No. 3 crochet hook.

### *Comment faire*



**A tip!** In order for the dishcloths to keep the colours from fading, you may soak them in cold water adding a small amount of white vinegar. This should also improve their absorbency.

**3** Wash the dishcloths before use at 40°C.

**Other variants** -



# A crocheted Dishcloth with Bobble Stitches

This dishcloth is crocheted with bobble stitches (which are abbreviated bbs or pc) and the finished dimensions of the dishcloth are 17 x 17 cm. We have used cotton yarn 8/4 on No. 3 crochet hook.

Watch our video No. 15140 in order to learn how to make bobble stitches. The finished dimensions of the dishcloth are 17 x 17 cm, but it is easy to change the size of the dishcloth. Each bobble is made in one stitch with two double crochet stitches between each bobble (i.e. 3 stitches in total per bobble = 1 cm).

## A TIP!

In order for the dishcloths to keep the colours from fading, you may soak them in cold water adding a small amount of white vinegar. This should also improve their absorbency. Wash the dishcloths before use.

The finished dimensions of the dishcloth are 17 x 17 cm. You will need approx. 26 gr of yarn.



## How to crochet the dishcloth:

Chain 37 stitches + 1 turning chain

**Row 1 & 2:** 2 rows of dc (i.e. dc in both rows)

**Row 3:** 2 dc, 1 bobble stitch (á 6 stiches), 2 dc (there will be 11 bobble stitches on the row)

**Row 4:** 1 row of dc

Repeat rows 3-4 until there are 17 rows of bobble stitches.

Finish with 2 rows of dc so that the finished dishcloth has a border all the way around consisting of 2 rows of dc.

Each bobble is crocheted in one stitch with 2 dc between each bobble. For a larger dishcloth, chain another 3 stitches per bobble = 1 cm.



## Abbreviations and symbols explanation:

S = Stitch

Tc = Turning chain

Dc = Double crochet stitch

