



Small Suitcases transformed into a Garden World with Paint, miniature Furniture and Accessories

v15498

Make your own garden world from two small papier-mâché suitcases, painted and arranged with wooden miniature furniture and accessories.

Comment faire



1 Paint the inside of the lid of the large suitcase with green paint and paint long strokes in the base of the suitcase with green paint for blades of grass.



2 Paint the inside of the small suitcase with pink paint and decorate with white dots. Use the brush handle for making dots.



3 Paint details with two coats of white paint on the door, the wheelbarrow and the picnic table.



4 Wrap natural hemp around both handles of the wheelbarrow. Finish with a knot underneath.



5 Paint the garden chair with two coats of pink paint and wrap natural hemp onto the seat. Finish with a knot underneath the seat.



6 Print out the PDF file attached to this idea. Cut out two squares from card and assemble them as tubes with double-sided foil tape. Attach the tubes underneath the lid of the suitcases so that the lids will remain open.





7
Copy the circle from the template onto a piece of card and attach a piece of self-adhesive foil tape large enough to cover the entire circle. Start from the centre and feed the natural hemp in a spiral outwards from the middle. Cut and trim when the entire circle is filled.



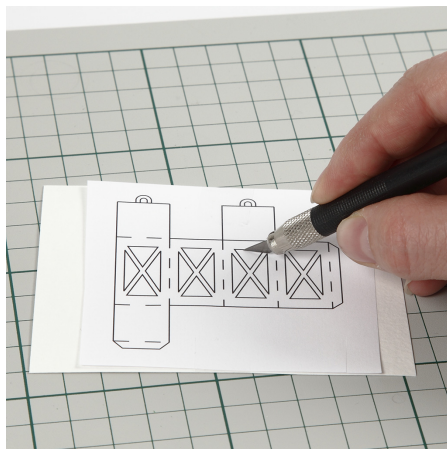
8
Cut six card flags and one piece of natural hemp. Attach a piece of self-adhesive foil tape onto the inside of the flags and fold in the middle around the piece of natural hemp.



9
Cut out the three flowers from card and paint details with pink paint. Bend the petals when the paint is dry in order to add a 3D effect.



10
Cut a card wreath and wrap a 90 cm piece of natural hemp around it. Divide a small piece of natural hemp in three and tie the pieces onto the lower part of the wreath. You now have a miniature dream catcher.



11
Cut out the lantern from card. Paint with pink paint and attach a small piece of natural hemp at the top for the handle.



12
Cut the book out of the template. Fold as illustrated in the photo and make a cut in the middle.



13
Assemble the book by folding in the middle and complete the pages as illustrated in the photo. You may secure it with double-sided foil tape.



14
Make a small ball of natural hemp.



15
Arrange the suitcases. Attach bunting in the base of the large suitcase. Place the lantern and the small ball of natural hemp on the table. You may place the gardening tools in the wheelbarrow and randomly attach the flowers.





16

Attach the door and the dream catcher inside the bottom of the small open suitcase. Place the rug next to the chair in the lid and place the small book on the seat.

Template

-